

SFI award holders secured
€125 million
 in external funding.
45% of this was from the EU

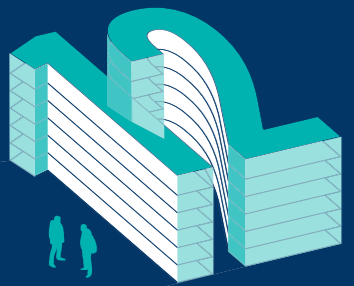
SFI supported approximately
2600
 People
 Including
451
 Lead Scientists

SFI awards supported
2,237
 scientific papers.
 40% are co-authored with internationally based researchers.
 8% have a co-author from industry.

SFI researchers were involved in the organisation of
715
 international and national conferences and workshops in 2013

38 SFI funded Scientific Conferences and Workshops in 2013
6,986 international delegates
3,349 national participants
 Projected economic value to Ireland up to **€8 million**
 SFI approved **307** new awards to **20** research bodies in Ireland
 SFI invested over **€152** million in projects

Note: Figures do not include public engagement and outreach support events



SFI RESEARCH CENTRES
 SFI has twelve cutting-edge research centres in place throughout the country and will work with over 200 industry partners.
 Industry has committed
€190 million

SFI has committed **€355 million** over the next six years.

SFI awards directly supported over 900 collaborations with industry

9
 460 Multinational Collaborations
 441 SME Collaborations

606
 individuals progressed from SFI funded teams.
65%
 of these remained in Ireland.

SFI SUPPORTED RESEARCHERS ENGAGED IN OVER 2990 OUTREACH/PUBLIC TALKS/LECTURES

Ireland highlighted as one of
FIVE
 up and coming countries in the world to watch for scientific research excellence.

Ireland is ranked **20th** in the world for overall international scientific citations per paper
1st in Immunology
1st in Animal and Dairy
3rd in Nanosciences
4th in Computer Science
6th in Materials Science

Science Foundation Ireland (SFI) is the national foundation for investment in scientific and engineering research. SFI invests in academic researchers and research teams who are most likely to generate new knowledge, leading edge technologies and competitive enterprises in the fields of science, technology, engineering and maths (STEM).

The Foundation promotes and supports the study of, education in, and engagement with STEM and promotes an awareness and understanding of the value of STEM to society and, in particular, to the growth of the economy.

SFI also advances co-operative efforts among education, government, and industry that support its fields of emphasis and promotes Ireland's ensuing achievements around the world.

Agenda 2020 is SFI's strategic plan over the period 2012 to 2020. It has four primary objectives:

1. To be the best science funding agency in the world at creating impact from excellent research and demonstrating clear value for money invested.
2. To be the exemplar in building partnerships that fund excellent science and drive it out into the market and society.
3. To have the most engaged and scientifically informed public.
4. To represent the ideal modern public service organisation, staffed in a lean and flexible manner, with efficient and effective management.

Research for Ireland's Future

Science Foundation Ireland
Wilton Park House
Wilton Place
Dublin 2
Ireland

t: + 353 1 607 3200
f: + 353 1 607 3201
e: info@sfi.ie
w: www.sfi.ie

 twitter.com/scienceirel



Key Statistics